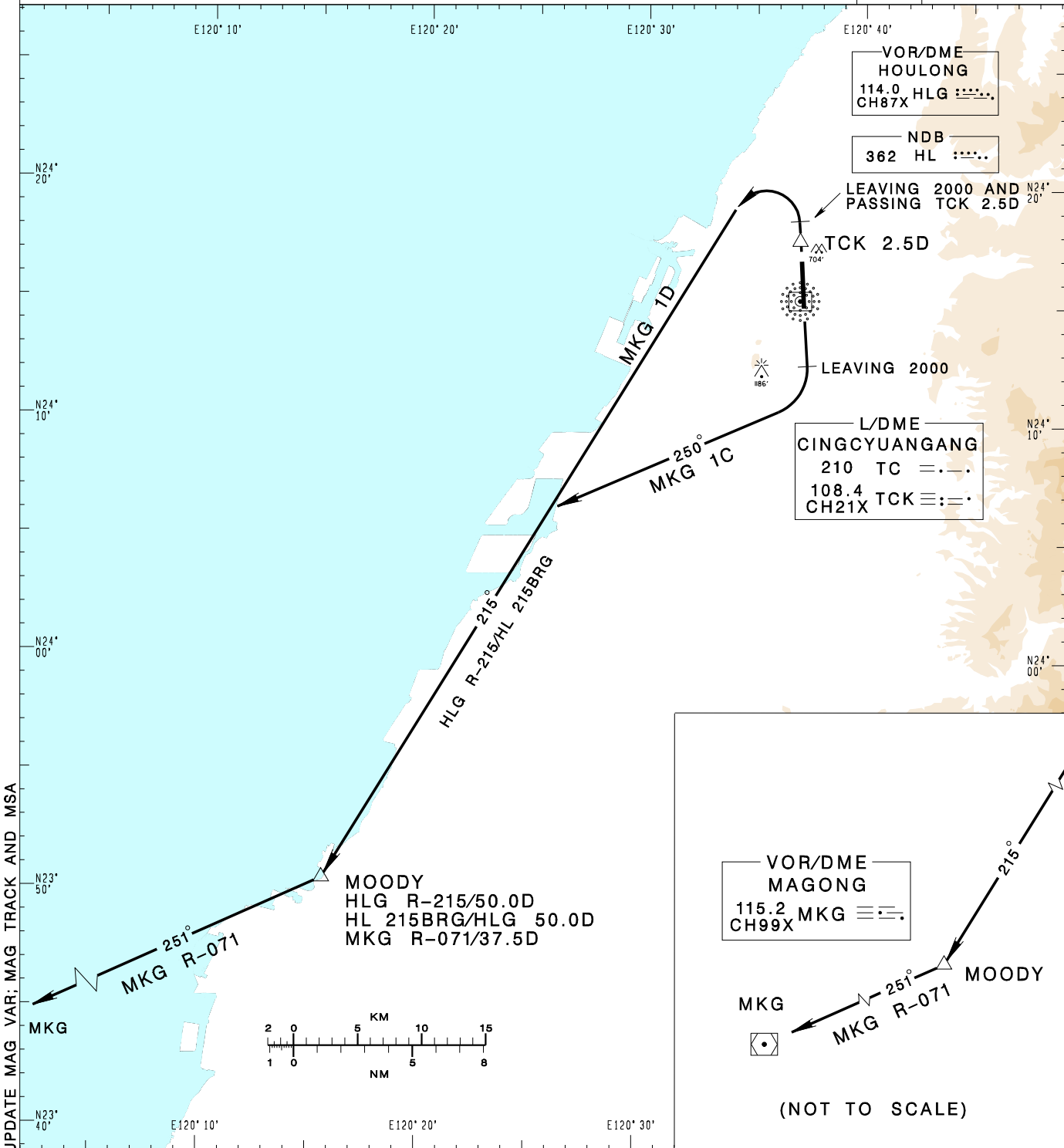


**臺中/清泉崗機場**  
TAICHUNG/CINGCYUANGANG AD

RCMQ SID  
MKG 1C(RWY18)  
MKG 1D(RWY36)

TAIPEI APP 130.1 129.6	TAICHUNG TWR 118.75 120.25	ATIS 127.75	VAR 5° W-2022 ↑	13600' MSA ARP 25NM
Apt Elev: 665'	Trans Level: FL130	Trans Alt: 11,000'		
BEARINGS ARE MAGNETIC; DISTANCES ARE NAUTICAL MILES; ELEVATIONS, HEIGHTS IN FEET				



CHANGES: RENAME: UPDATE MAG VAR; MAG TRACK AND MSA

**MAGONG ONE CHARLIE DEPARTURE**  
Depart on RWY HDG until leaving 2,000, turn right HDG 250 to track HLG R-215/HL 215BRG to MOODY, then track MKG R-071 to MKG.

**MAGONG ONE DELTA DEPARTURE**  
Depart on RWY HDG until leaving 2,000 and passing TCK 2.5D, turn left to track HLG R-215/HL 215BRG to MOODY, then track MKG R-071 to MKG.

**NOTE**  
1. MKG 1C, MKG 1D:  
Requires a minimum climb gradient of 5% (300ft/NM) until 2000ft.  
2. Caution close-in obstacles (trees) 704ft MSL, 150m northeast of RWY36 DER.